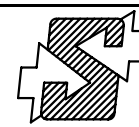
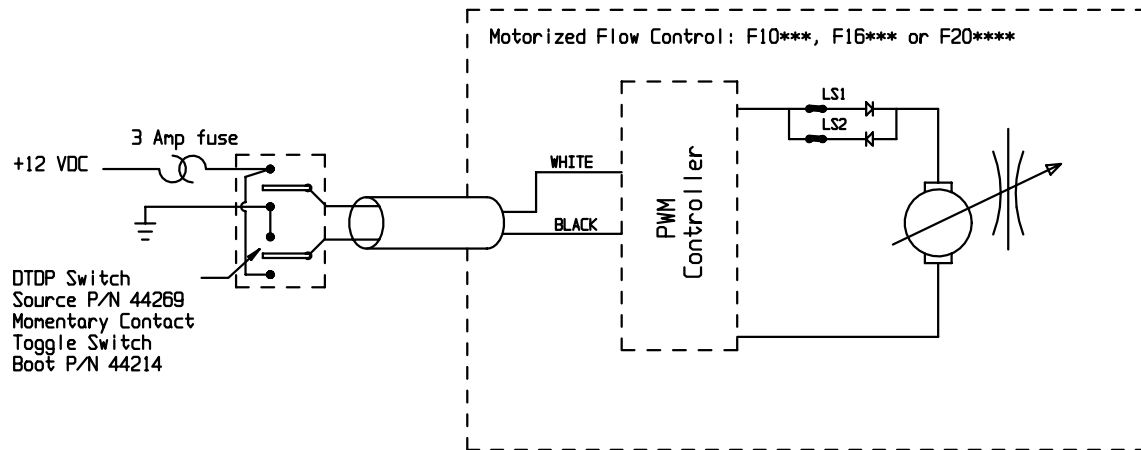


NOTICE - SOURCE FLUID POWER CLAIMS PROPRIETARY RIGHTS ON THE INFORMATION DISCLOSED ON THIS DRAWING. IT IS ISSUED IN CONFIDENCE FOR ENGINEERING INFORMATION ONLY AND MAY NOT BE REPRODUCED OR USED TO MANUFACTURE ANYTHING HEREON WITHOUT DIRECT WRITTEN PERMISSION FROM SOURCE FLUID POWER TO THE USER.



SOURCE FLUID POWER
 331 Lake Hazeltine Drive
 Chaska, MN 55318
 952-368-3866 (Fax) 952-448-3392

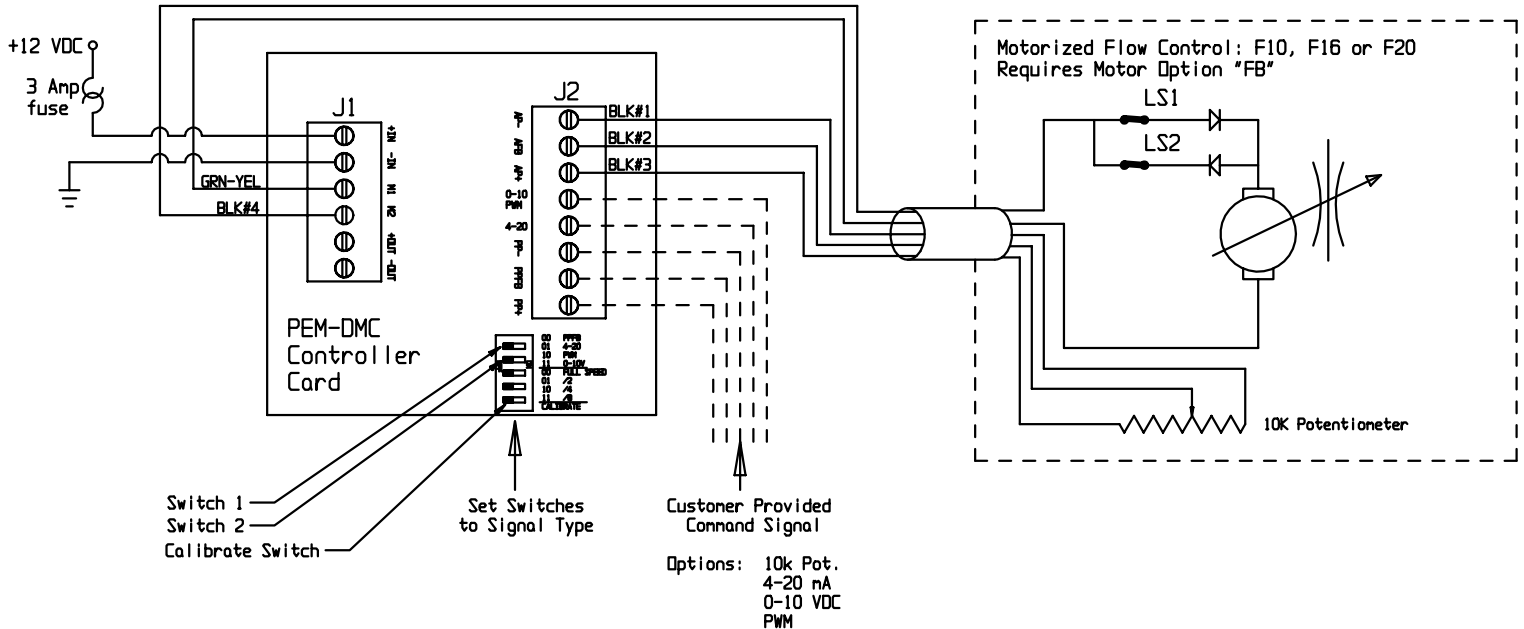
Wiring Diagram for Customer Provided Double-Pole-Double-Throw Switch



Specifications:

- Supply power : 10 to 16 VDC, 150 mA continuous, 2.7 A Peak
 24 VDC optional, consult factory for part number
- Operation: + 12 VDC on black wire and ground on white wire will drive valve open
 + 12 VDC on white wire and ground on black wire will drive valve closed
 Power will internally disconnect at end of travel and respond only to reversed polarity.
- Options: With internal feedback option (FB) 3 additional wires will be present. Consult factory for full range of options and specifications.

Wiring Diagram for Optional PEM-DMC Digital Motor Controller



Notes:

See separate sheets for information and calibration procedures.
 Digital Motor Controller requires "FB" motor drive option.
 Consult factory for application possibilities.