

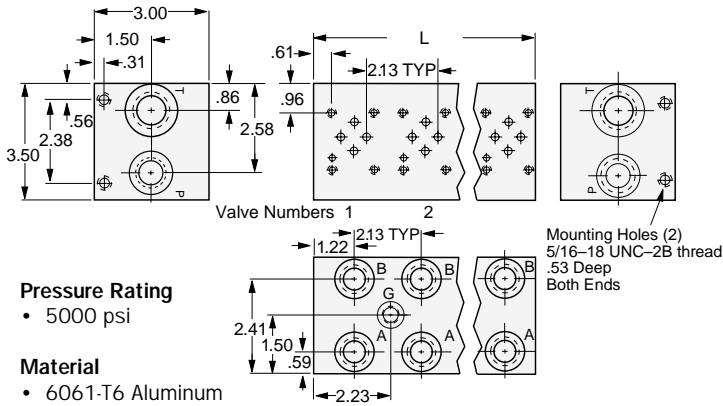
# D03 (OLD D01) Manifolds

SOURCE SELLS SOLUTIONS.



## Parallel

2.13 Spacing

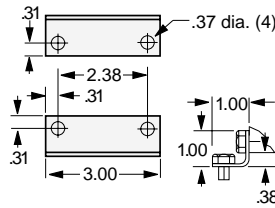


**Pressure Rating**  
• 5000 psi

**Material**  
• 6061-T6 Aluminum

## Optional Mounting Bracket Kit

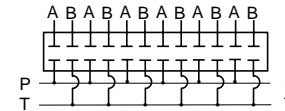
Part No. SFP10081



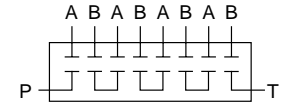
## PORTS

- T  
1 1/16-12 O-ring port (SAE -12)
- A & B  
3/4-16 O-ring port (SAE -8)
- G Gauge with plug  
7/16-20 O-ring port (SAE -4)
- P  
7/8-14 O-ring port (SAE -10)

## Parallel

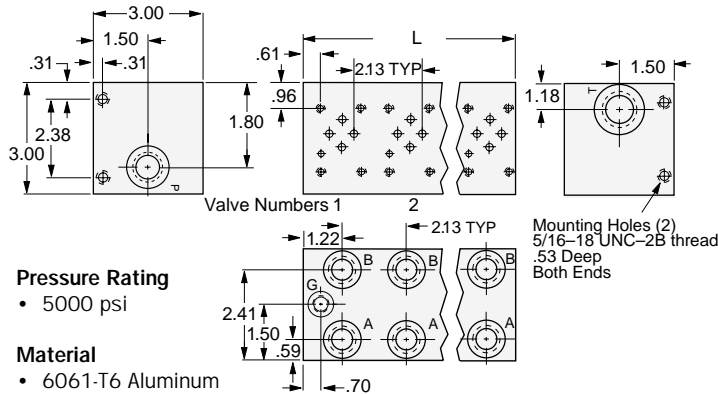


## Series



## Series

2.13 Spacing



**Pressure Rating**  
• 5000 psi

**Material**  
• 6061-T6 Aluminum

TYPE	NO. OF VALVES	PART NUMBER	"L" INCHES	APPROX WT LBS.
Parallel	2	SFP10002	4.57	4.1
	3	SFP10003	6.70	6.1
	4	SFP10004	8.83	8.1
	5	SFP10005	10.96	10.1
	6	SFP10006	13.09	12.0
	7	SFP10007	15.22	14.0
	8	SFP10008	17.35	16.0
	9	SFP10009	19.48	18.0
	10	SFP10010	21.61	20.0
	11	SFP25105-11	23.74	22.0
Series	13	SFP25105-13	28.00	26.0
	15	SFP25105-15	32.26	30.0
	16	SFP25105-16	34.39	32.0
	2	SFP10052	4.57	3.5
	3	SFP10053	6.70	5.2
	4	SFP10054	8.83	6.9
5	SFP10055	10.96	10.0	
6	SFP10056	13.09	12.0	

Optional load sense checks are available on A and B ports; please consult factory. To add optional relief cavity, add "R" after part number and specify cavity (generic 10-2 or Sun T-10A cavities available). Example: 10004R R=10-2.

# D03 (Old D01) Subplates

## Side Ported

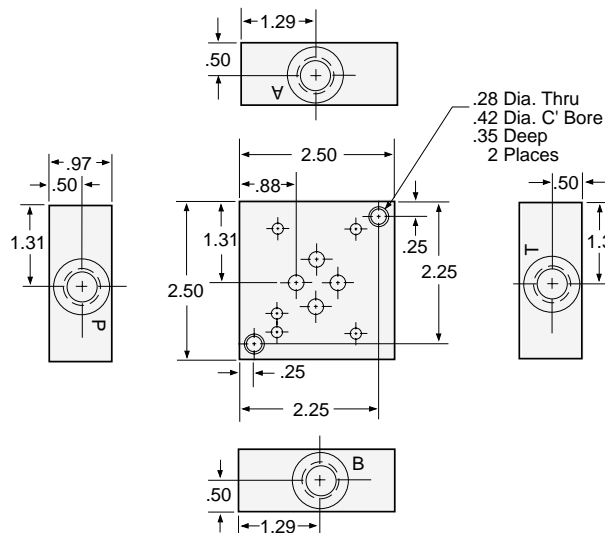
Part Number SFP10101

**Port Size**  
• 9/16-18 O-ring ports (4)  
(SAE -6)

**Pressure Rating**  
• 5000 psi

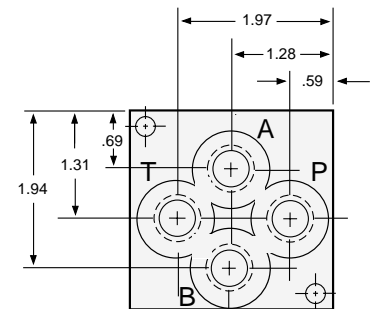
**Material**  
• 6061-T6 Aluminum

Two (2) 1/4-20 X 1 inch long socket head cap screws are furnished with each subplate (90012)



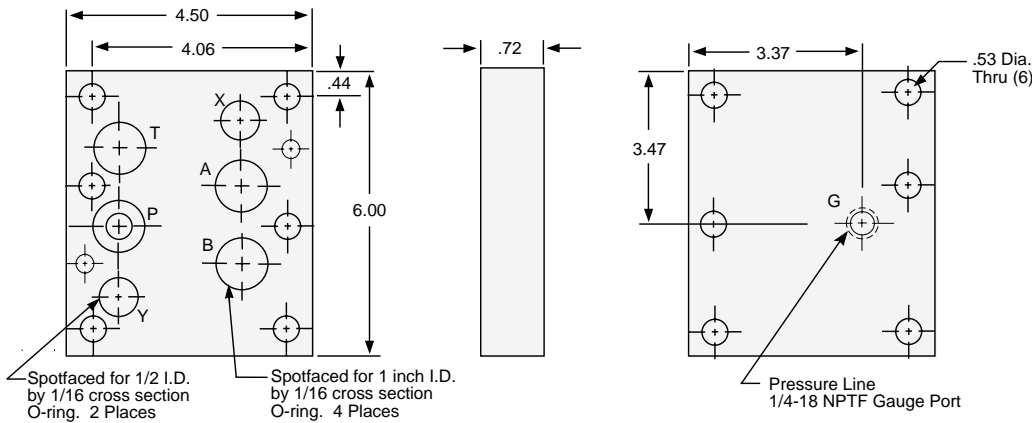
## Back Ported

Part Number SFP10102

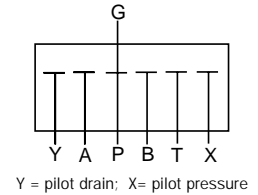


# D08 (Old D06) Cover Plate

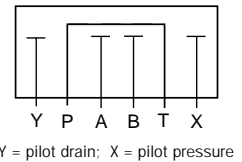
SOURCE SELLS SOLUTIONS.



**Part No. SFP10132**  
with gauge port



**Part No. SFP10133**

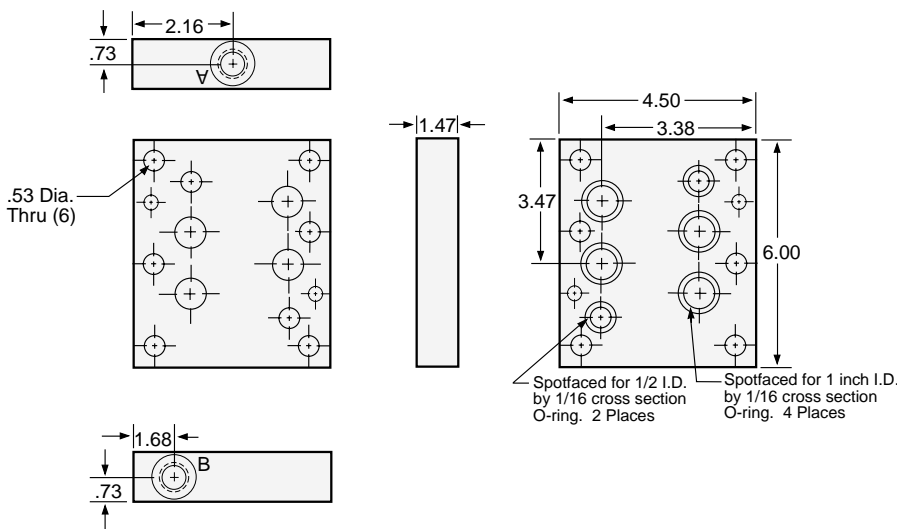


**Pressure Rating:** 3500 psi **Material:** 6061-T6 Aluminum

**Items Furnished with Cover Plate:**

- Six (6) 1/2-13 X 1-1/2 long socket head cap screws (90010)
- Two (2) small Viton O-rings (90003) AS 568A-014
- Four (4) large Viton O-rings (90005) AS 568A-022
- Two (2) Roll Pins (90007)

# D08 (Old D06) Tapping Plate



**Port Size:** 3/4-16 O-ring ports (2) (SAE -8)

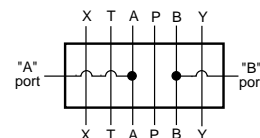
**Pressure Rating:** 3500 psi

**Material:** 6061-T6 Aluminum

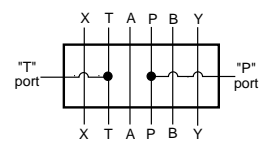
**Items Furnished with Tapping Plate:**

- Two (2) small Viton O-rings (90003) AS 568A-014
- Four (4) large Viton O-rings (90005) AS 568A-022
- Two (2) Roll Pins (90007)

**A & B Ports**  
**Part No. SFP10138**



**P & T Ports**  
**Part No. SFP10139**



# Valve Adaptors

D03 (Old D01)	to	D05 (Old D02)	Part Number SFP10140 (A to B, B to A)
D03 (Old D01)	to	D05 (Old D02)	Part Number SFP10141 (High Flow A to A, B to B)
D03 (Old D01)	to	D08 (Old D06)	Part Number SFP10142
D05 (Old D02)	to	D08 (Old D06)	Part Number SFP10143
D05H (Old D02H)	to	D08 (Old D06)	Part Number SFP10144
D06 (Old D03)	to	D08 (Old D06)	Part Number SFP10145
D07 (Old D04)	to	D08 (Old D06)	Part Number SFP10146

All adaptors are 6061-T6 Aluminum, Pressure Rating 3500 psi.  
All adaptors come with interface O-rings, mounting screws and alignment pins.

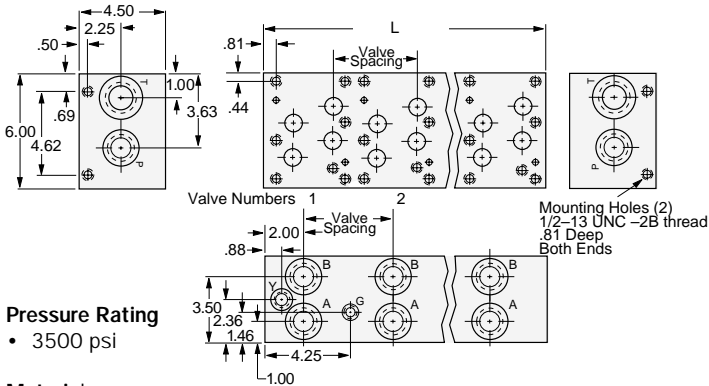
# D08 (OLD D06) Manifolds

SOURCE SELLS SOLUTIONS.



## Parallel

5.25 spacing



### Pressure Rating

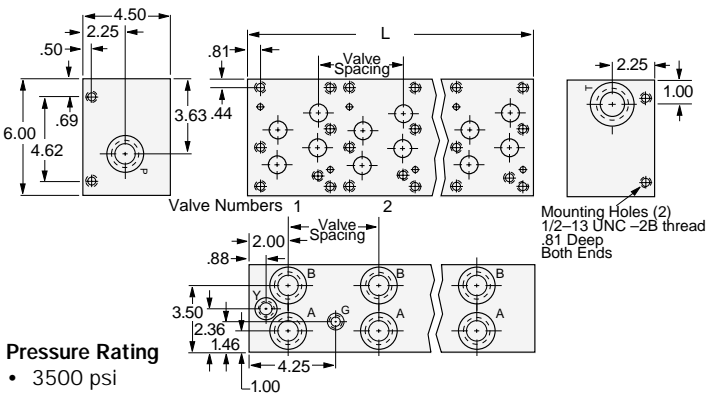
- 3500 psi

### Material

- 6061-T6 Aluminum

## Series

5.25 spacing



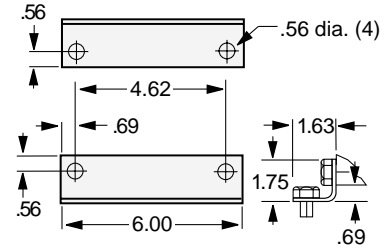
### Pressure Rating

- 3500 psi

### Material

- 6061-T6 Aluminum

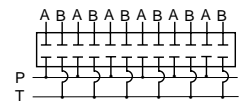
## Brackets (Optional)



## Ports

- P, A, & B: 1 5/16-12 O-ring ports (SAE -16)
- T: 1 5/8-12 O-ring ports (SAE -20)
- Y: 9/16-18 O-ring port (SAE -6)
- X (optional; not shown): 7/16-20 O-ring port (SAE -4)
- G Gauge with plug: 7/16 -20 O-ring port (SAE -4)

## Parallel



## Series



TYPE	NO. OF VALVES	PART NUMBER	"L" INCHES	APPROX WT LBS.
Parallel	2	SFP10032	10.50	25.4
	3	SFP10033	15.75	38.1
	4	SFP10034	21.00	50.9
Series	2	SFP10067	10.50	25.4
	3	SFP10068	15.75	38.1

To add optional relief cavity, add "R" after part number and specify cavity (generic 10-2 or Sun T-10A cavities available). Example: 10004R R=10-2.

# D08 (Old D06) Subplate

## Side Ported

Part Number SFP10110

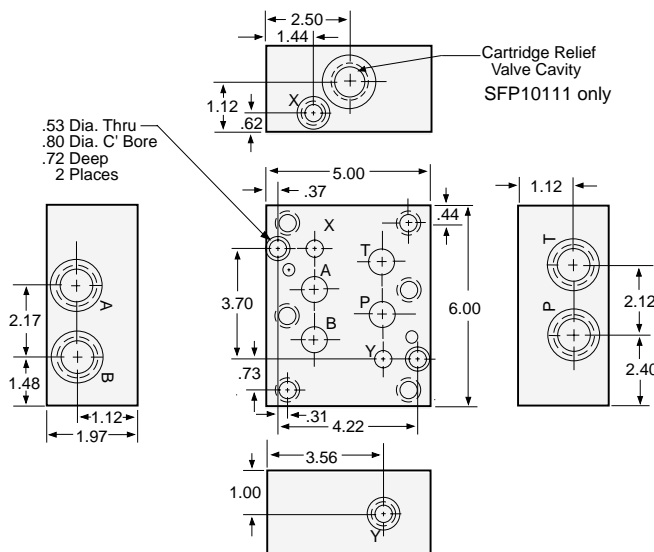
### Port Sizes

- P, T, A & B  
1 5/16-12 O-ring port (SAE -16)
- X & Y  
9/16-18 O-ring port (SAE -6)

Pressure Rating: 3500 psi

Material: 6061-T6 Aluminum

Two (2) 1/2-13 X 2 long socket head cap screws are furnished with each subplate (90016)



## Side Ported

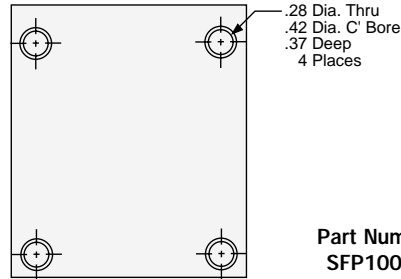
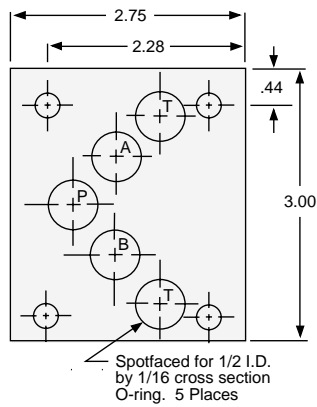
with relief valve cavity  
Part Number SFP10111

The Relief Valve Cavity is machined to dimensions furnished by the following manufacturers:

Compact Controls	109
Delta	E Series
Fluid Controls	SC-316
Fluid Power Systems	10-2
HydraForce	VC-10-2
Modular Controls	C-10-2
Parker	C-10-2

# D05 (Old D02) Cover Plate

SOURCE SELLS SOLUTIONS.



**Pressure Rating:** 4500 psi

**Material:** 6061-T6 Aluminum

**Items Furnished with Cover Plate**

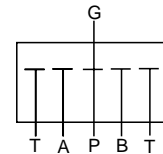
- Four (4) 1/4-20 X 3/4 long socket head cap screws (90009)
- Five (5) Viton O-rings (90003) AS 568A-014

Spotfaced for 1/2 I.D. by 1/16 cross section O-ring. 5 Places

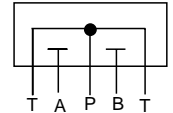
**Part Number SFP10080**  
without gauge port



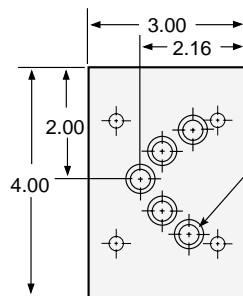
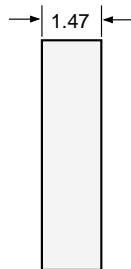
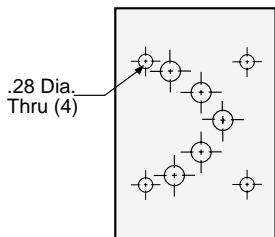
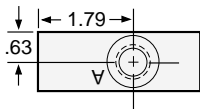
**Part Number SFP10130**  
with gauge port



**Part Number SFP10131**



# D05 (Old D02) Tapping Plate



Spotfaced for 1/2 I.D. by 1/16 cross section O-ring. 5 Places

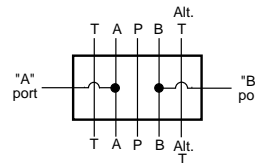
**Port Size:** 3/4-16 O-ring ports (2) (SAE -8)

**Pressure Rating:** 4500 psi

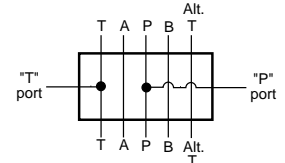
**Material:** 6061-T6 Aluminum

Five (5) Viton O-rings (90003) are furnished with each tapping plate - AS 568A-014

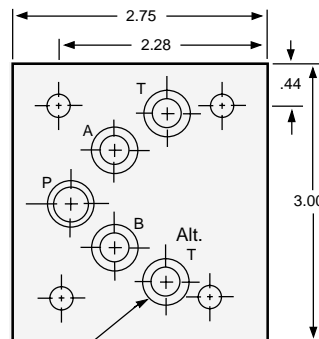
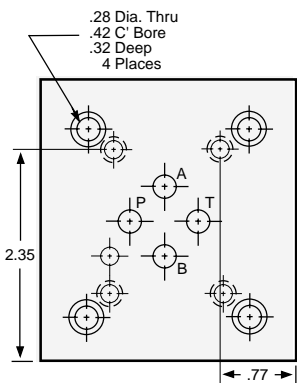
**A & B Ports**  
Part No. SFP10136



**P & T Ports**  
Part No. SFP10137



# D03 (Old D01) Valve Adaptor



Spotfaced for 1/2 I.D. by 1/16 cross section O-ring. 5 Places

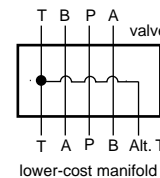
**Pressure Rating:** 4500 psi

**Material:** 6061-T6 Aluminum

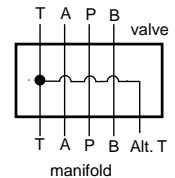
**Items Furnished with Adaptor:**

- Four (4) 1/4-20 X 1-1/2 inch long socket head cap screws (90022)
- Five (5) Viton O-rings for the manifold surface (90003) AS 568A-014

**Part No. SFP10140**  
"A" = 0.98"



**Part No. SFP10141**  
"A" = 1.45"



# D05 (Old D02) Manifold

# D05 (Old D02) Subplate

SOURCE SELLS SOLUTIONS.



## Side Ported

Part Number SFP10105

### Port Size

- 3/4-16 O-ring ports (4)  
(SAE -8)

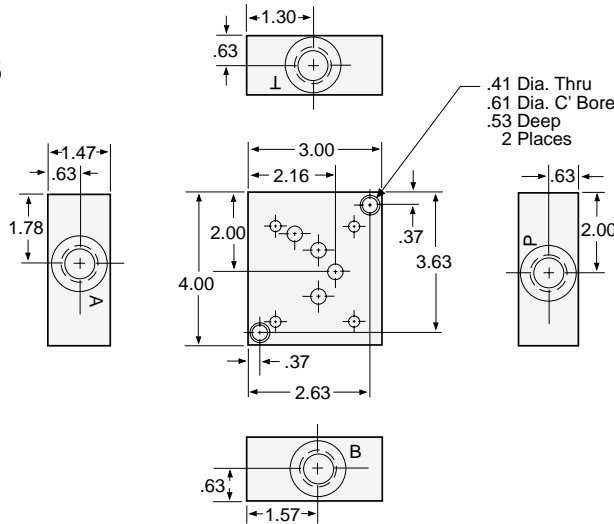
### Pressure Rating

- 4500 psi

### Material

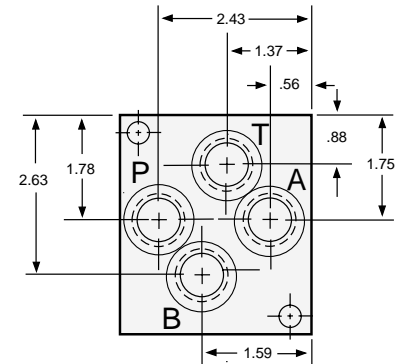
- 6061-T6 Aluminum

Two (2) 3/8-16 X 1 1/2 long socket head cap screws are furnished with each subplate (90002)



## Back Ported

Part Number SFP10106



# D05 (Old D02) Subplate

## Dual Ported

Part Number SFP10107

### Port Size

- 3/4-16 O-ring ports (6)  
(SAE -8)

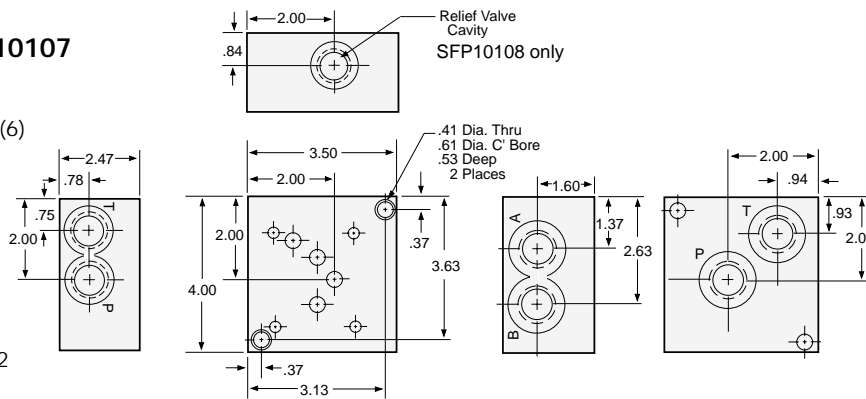
### Pressure Rating

- 4500 psi

### Material

- 6061-T6 Aluminum

Two (2) 3/8-16 X 2 1/2 long socket head cap screws are furnished with each subplate (90023)



## Dual Ported

with relief valve cavity  
Part Number SFP10108

The Relief Valve Cavity is machined to dimensions furnished by the following manufacturers:

Compact Controls	109
Delta	E Series
Fluid Controls	SC-316
Fluid Power Systems	10-2
HydraForce	VC-10-2
Modular Controls	C-10-2
Parker	C-10-2

# D05 (Old D02) Subplate

## Dual Ported with relief valve cavity

Part Number SFP10109

### Port Size

- 3/4-16 O-ring ports (6)  
(SAE -8)

### Pressure Rating

- 4500 psi

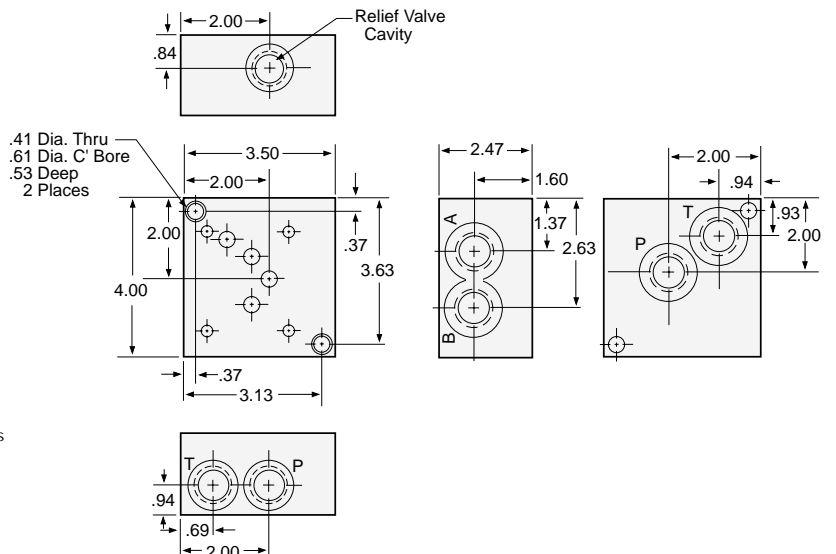
### Material

- 6061-T6 Aluminum

Two (2) 3/8-16 X 2 1/2 long socket head cap screws are furnished with each subplate (90023)

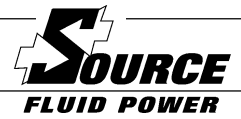
The Relief Valve Cavity is machined to dimensions furnished by the following manufacturers:

Compact Controls	109
Delta	E Series
Fluid Controls	SC-316
Fluid Power Systems	10-2
HydraForce	VC-10-2
Modular Controls	C-10-2
Parker	C-10-2



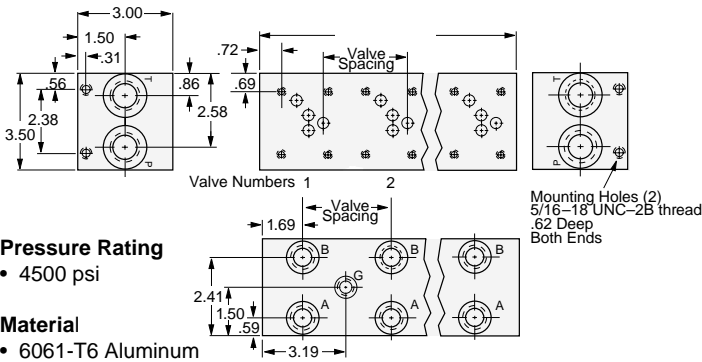
# D05 (OLD D02 ) Manifolds

SOURCE SELLS SOLUTIONS.



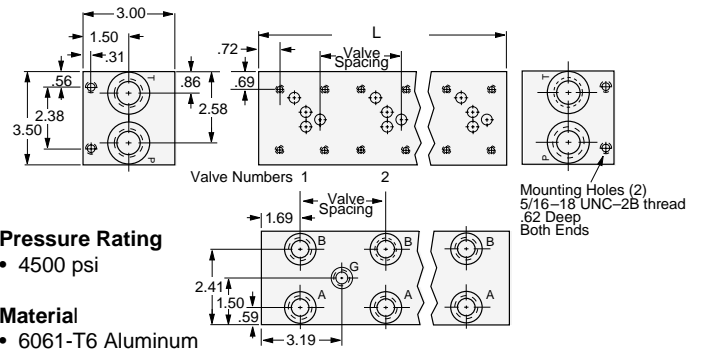
## Parallel

3.25 Spacing



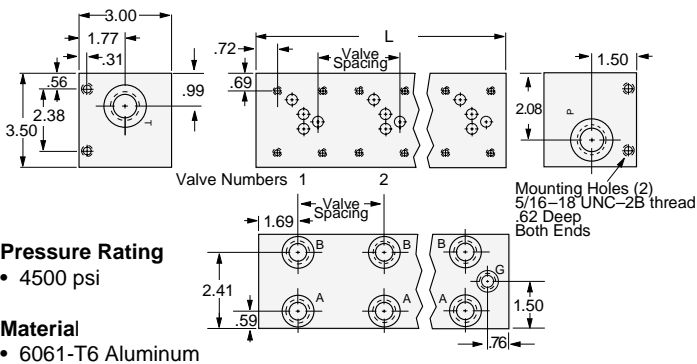
## Parallel

5.00 Spacing



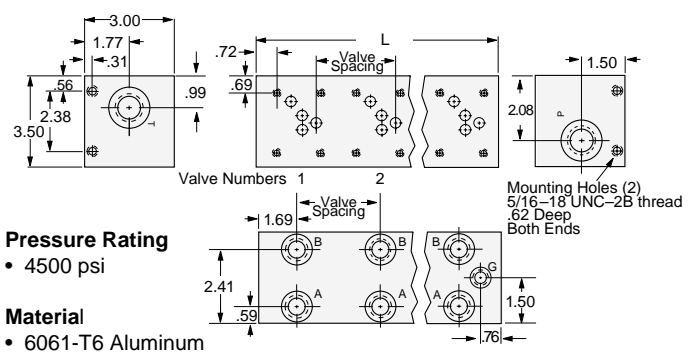
## Series

3.25 Spacing



## Series

5.00 Spacing



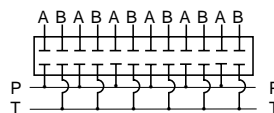
TYPE	NO. OF VALVES	PART NUMBER	"L" INCHES	APPROX WT LBS.
Parallel	2	SFP10012	6.50	6.0
	3	SFP10013	9.75	9.0
	4	SFP10014	13.00	12.0
	5	SFP10015	16.25	15.0
	6	SFP10016	19.50	18.0
	7	SFP10017	22.75	21.0
	8	SFP10018	26.00	24.0
	Series	2	SFP10057	6.50
3		SFP10058	9.75	9.0
4		SFP10059	13.00	12.0

TYPE	NO. OF VALVES	PART NUMBER	"L" INCHES	APPROX WT LBS.
Parallel	2	SFP10022	8.25	7.5
	3	SFP10023	13.25	12.3
	4	SFP10024	18.25	16.9
	5	SFP10025	23.25	21.5
	6	SFP10026	28.25	26.2
	7	SFP10027	33.25	30.8
	8	SFP10028	38.25	35.5
	Series	2	SFP10062	8.25
3		SFP10063	13.25	12.3
4		SFP10064	18.25	16.9

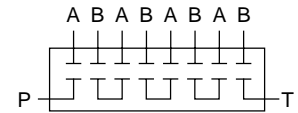
### Ports

- P & T - 1 1/16-12 O-ring port (SAE -12)
- A & B - 3/4-16 O-ring port (SAE -8)
- G Gauge with plug - 7/16-20 O-ring port (SAE -4)

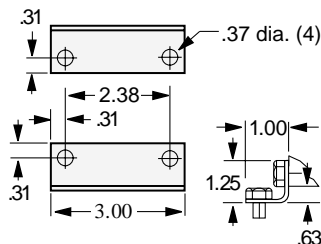
### Parallel



### Series



### Optional Mounting Bracket Kit: Part Number SFP10082



Optional load sense checks are available on A and B ports; please consult factory. To add optional relief cavity, add "R" after part number and specify cavity (generic 10-2 or Sun T-10A cavities available). Example: 10004R R=10-2.

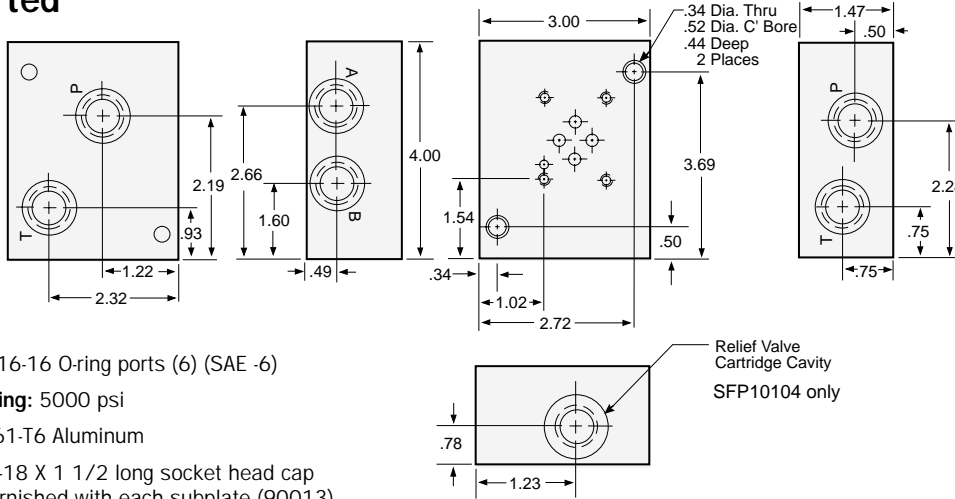
# D03 (Old D01) Subplate

SOURCE SELLS SOLUTIONS.



## Dual Ported

no relief  
Part Number  
SFP10103



Dual Ported  
with relief valve cavity  
Part Number SFP10104

The Relief Valve Cavity is machined to dimensions furnished by the following manufacturers:

Compact Controls	109
Delta	E Series
Fluid Controls	SC-316
Fluid Power Systems	10-2
HydraForce	VC-10-2
Modular Controls	C-10-2
Parker	C-10-2

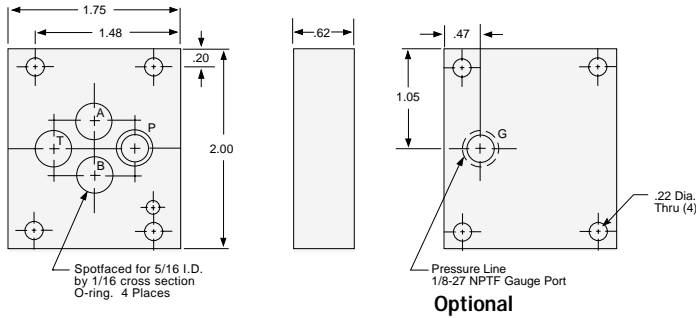
Port Size: 9/16-16 O-ring ports (6) (SAE -6)

Pressure Rating: 5000 psi

Material: 6061-T6 Aluminum

Two (2) 5/16-18 X 1 1/2 long socket head cap screws are furnished with each subplate (90013)

# D03 (Old D01) Cover Plates



## Parallel

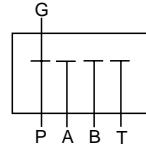
Part Number SFP10089 without gauge port  
Part Number SFP10090 with gauge port

Pressure Rating: 5000 psi

Material: 6061-T6 Aluminum

Items Furnished with Cover Plate

- Four (4) #10-24 X 7/8 long socket head cap screws (90008)
- Four (4) Viton O-rings (90000) AS 568A-011
- One (1) Roll Pin (90006)

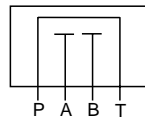


## Series

Part Number SFP10091

Pressure Rating: 5000 psi

Material: 6061-T6 Aluminum

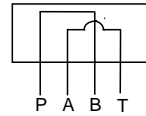


## Cross Over

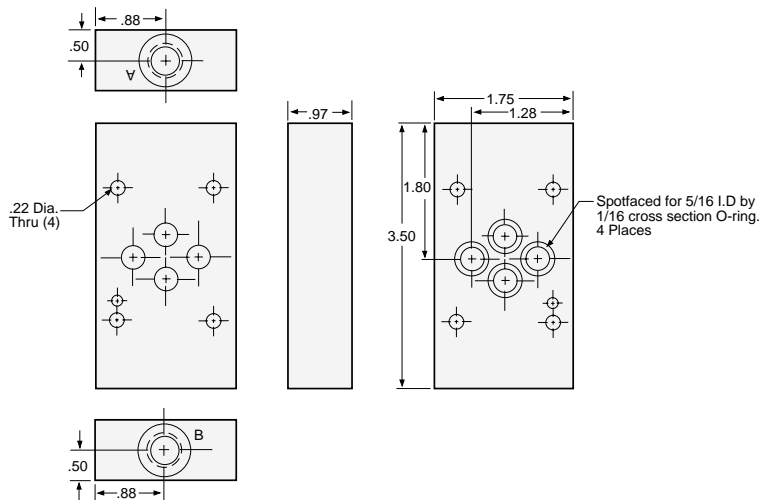
Part Number SFP10092

Pressure Rating: 5000 psi

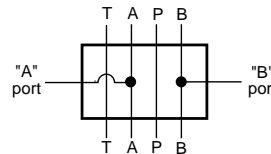
Material: 6061-T6 Aluminum



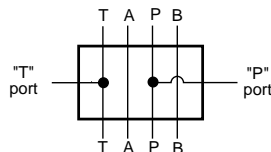
# D03 (Old D01) Tapping Plate



Part Number SFP10134



Part Number SFP10135



## A & B Ports

Port Size

- 9/16-18 O-ring ports (2) (SAE -6)

Pressure Rating

- 5000 psi

Material

- 6061-T6 Aluminum

Items Furnished with Tapping Plate

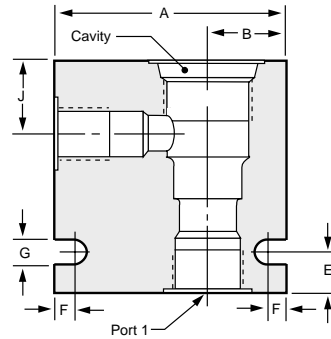
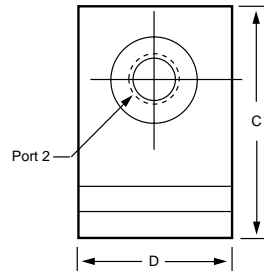
- Four (4) Viton O-rings (90000) AS 568A-011
- One (1) Roll Pin (90006)

# In-Line Valve Bodies

SOURCE SELLS SOLUTIONS.



- 6061-T6 Aluminum
- Pressure Rating 3500 psi

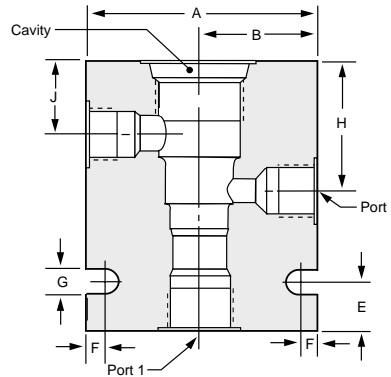
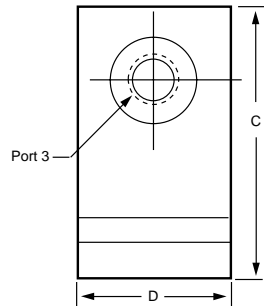


For cartridge type 2-way valves

Part Number	Cavity Threads	Port 1&2	A	B	C	D	E	F	G	J	Common Cavity Designation
SFP10180	3/4-16	SAE-6	2.50	1.00	2.00	1.50	.75	.38	.28	.59	8-2
SFP10181	3/4-16	SAE-6	2.50	1.00	2.00	1.50	.75	.38	.28	.61	8-2
SFP10182	7/8-14	SAE-8	2.50	1.12	2.50	2.00	.75	.38	.28	.75	10-2
SFP10183	1 5/16-12	SAE-12	4.00	1.50	3.50	2.50	1.00	.41	.34	1.00	16-2
SFP10184	1 5/8-12	SAE-16	4.00	1.50	3.50	3.00	1.00	.41	.34	1.28	20-2

# In-Line Valve Bodies

- 6061-T6 Aluminum
- Pressure Rating 3500 psi

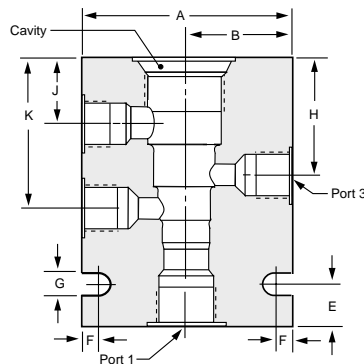
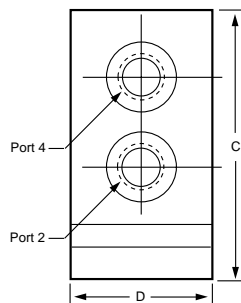


For cartridge type 3-way valves

Part Number	Cavity Threads	Port 1&2	Port 3	A	B	C	D	E	F	G	H	J	Common Cavity Designation
SFP10170	3/4-16	SAE-6	SAE-6	2.50	1.25	3.00	1.50	.75	.38	.28	1.14	.58	8-3
SFP10171	7/8-14	SAE-8	SAE-6	3.00	1.50	3.00	2.00	.75	.38	.28	1.38	.75	10-3
SFP10172	7/8-14	SAE-8	SAE-6	3.00	1.50	3.00	2.00	.75	.38	.28	1.41	.59	10-3S
SFP10173	1 5/16-12	SAE-12	SAE-6	4.00	2.00	3.50	2.50	1.00	.41	.34	1.50	.69	16-3S
SFP10174	1 5/16-12	SAE-12	SAE-12	4.00	2.00	4.50	2.50	1.00	.41	.34	2.12	1.00	16-3
SFP10175	1 5/8-12	SAE-16	SAE-16	4.50	2.25	5.25	3.00	1.00	.41	.34	2.84	1.25	20-3

# In-Line Valve Bodies

- 6061-T6 Aluminum
- Pressure Rating 3500 psi



For cartridge type 4-way valves

Part Number	Cavity Threads	Ports (4)	A	B	C	D	E	F	G	H	J	K	Common Cavity Designation
SFP10160	3/4-16	SAE-6	2.50	1.25	3.00	1.50	.50	.38	.28	1.15	.59	1.70	8-4
SFP10161	7/8-14	SAE-8	3.00	1.50	3.50	2.00	.50	.38	.28	1.38	.75	2.00	10-4
SFP10162	1 5/16-12	SAE-12	4.50	2.25	5.50	2.50	1.00	.41	.34	2.12	1.00	3.25	16-4
SFP10163	1 5/8-12	SAE-16	5.00	2.50	7.00	3.00	1.00	.41	.34	2.84	1.25	4.47	20-4