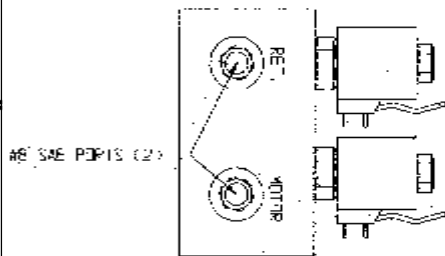


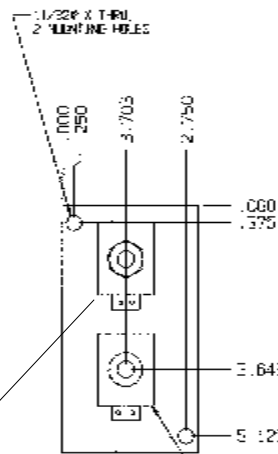


NOTE: • Photograph incorporates Source Fluid Power MFC for ratio adjustment.  
 • Drawing illustrates PWM valve for ratio adjustment.

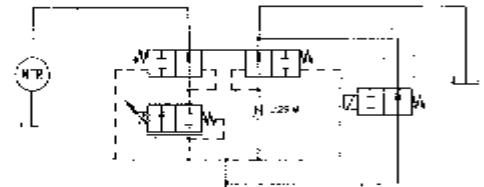


2x SAE PORTS (#8)

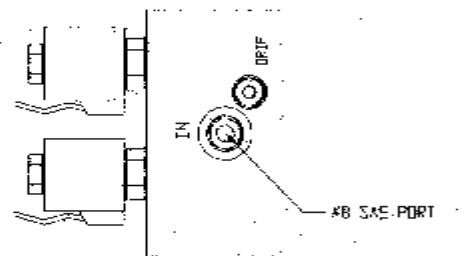
2-WAY SOLENOID VALVE TURNS PRE-WET APPLICATOR ON/OFF



PROPORTIONAL FLOW CONTROL VALVE. PWM CARTRIDGE, SOURCE MOTORIZED FLOW CONTROL, OR MANUAL VALVE



HYDRAULIC SCHEMATIC



#8 SAE PORT

**FUNCTION**

⊙SFP25254 pre-wet valve is a proportional flow divider which, when placed in the return line of a conveyor motor, will bleed off a proportion of return flow to drive a pre-wet pump. Flow to the pre-wet pump varies in proportion to the conveyor motor flow, so it will apply liquid proportionally to the amount of material being spread. The ratio of the divider can be changed remotely allowing pre-wet concentration to be changed on the fly if a Source Motorized Flow Control or PWM valve is used. The adjustment valve can also be any manual flow control valve that fits a 10-2 cavity. Pre-wet flow can be turned on and off using a two-way solenoid valve.

**OPERATING PRESSURE**

⊙3000 psi max.

**FLOW RANGE**

⊙10 GPM

**CONSTRUCTION**

⊙ Anodized aluminum/steel

**PORTING**

⊙Pressure: SAE #8  
 ⊙Work and Bypass: SAE #8

**HOW TO ORDER**

⊙Contact factory for part number and options

◆ We make it simple to order. Complete the order form and fax it to us. Or, if you have questions, call us. ◆  
 Telephone: (952) 368-3866 ◆ Fax: (952) 448-3392 ◆ www.sourcefp.com