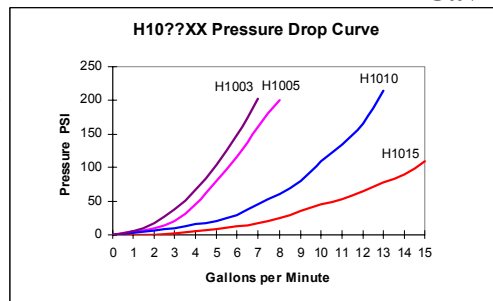


Function: Manual flow control for restrictive type flow control.
-Non pressure compensated.

Applications: The H10** is a manual version of the Source Fluid Power -10 size motorized flow control. It can be used to provide alternate manual flow control in any application where the motorized flow control is not required.

Operating Pressure:
• 5000 psi max.

Cartridge Weight: 1.0 lbs.



Flow Range:

- Based on 100 PSI fully open pressure drop
- 0-3 GPM.
- 0-5 GPM.
- 0-10 GPM.
- 0-15 GPM.

(Maximum flow ratings reflect flow at 100 psi drop when valve is fully open. Valve will handle significantly higher flows at higher pressure drop).

Cavity: 10-2, Industry common cavity, SAE #10.
7/8-14 UNC thread x .625 nose diameter.

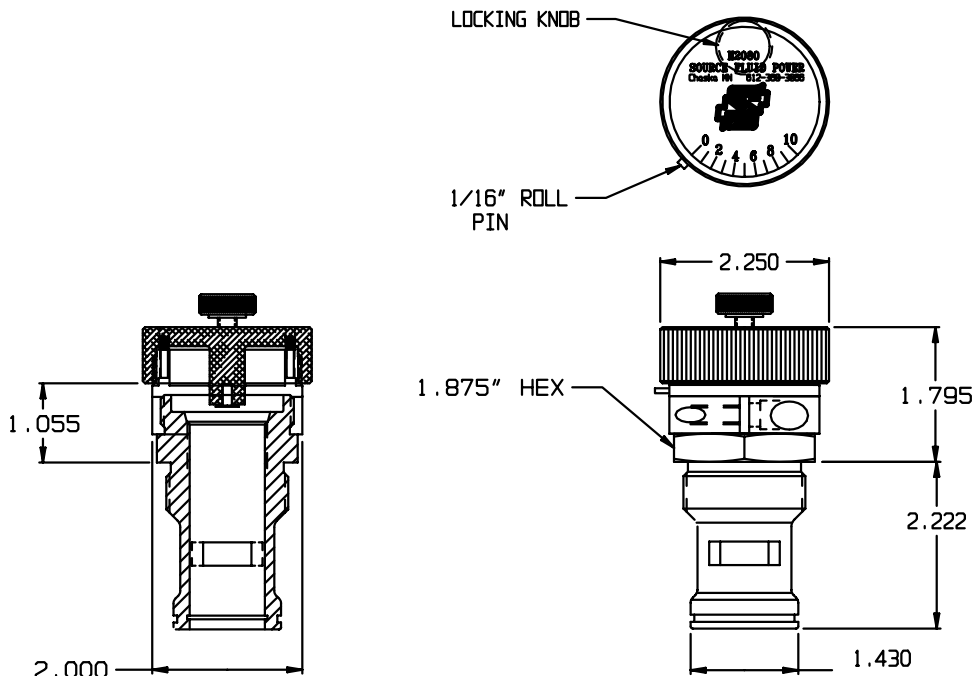
Seal Kit = SFP25247

H10 * * * * * * * *

How to Order

Select Flow Range
03 for 0-03 GPM
05 for 0-05 GPM
10 for 0-10 GPM
15 for 0-15 GPM

Manifold
No Manifold, Leave Blank.
10182 Standard Line Body, SAE #8
10182 LS Body with Load Sense Port, SAE #10
* * Consult Factory for other options.



Function: Manual flow control for restrictive type flow control.

- Non pressure compensated.
- 90 degree rotation.

Applications: The H20** is a manual version of the Source Fluid Power -20 size motorized flow control. It can be used to provide alternate manual flow control in any application where the motorized flow control is not required.

Operating Pressure:

- 5000 psi max.

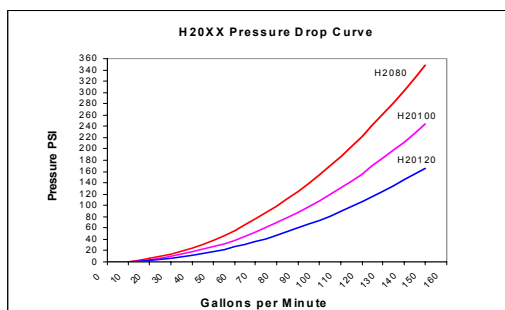
Cartridge Weight: 1.1 lbs.

Flow Range:

- Based on 100 PSI fully open pressure drop
- 0-80 GPM.
- 0-100 GPM.
- 0-120 GPM.

(Maximum flow ratings reflect flow at 100psi drop when valve is fully open. Valve will handle significantly higher flows at higher pressure drop.)

Cavity: 20-2, Industry common cavity, SAE #20
1 5/8 -12 UNC thread x 1.43 nose diameter.



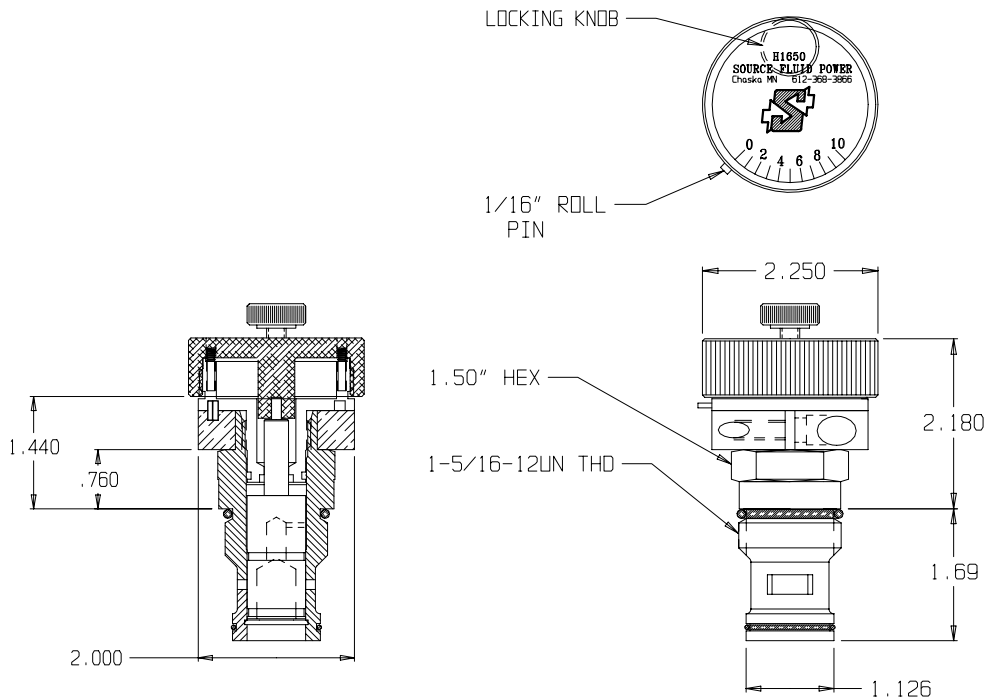
Seal Kit = SFP25673

H20 * * * * * * * *

How to Order

Select Flow Range
80 for 0-80 GPM
100 for 0-100 GPM
120 for 0-120 GPM

Manifold
No Manifold, Leave Blank.
10184 Standard Line Body, SAE #16
10184 LS Body with Load Sense Port, SAE #20
* * Consult Factory for other options



Function: Manual flow control for restrictive type flow control.

- Non pressure compensated.
- 90 degree rotation.

Applications: The H16** is a manual version of the Source Fluid Power -16 size motorized flow control. It can be used to provide alternate manual flow control in any application where the motorized flow control is not required.

Operating Pressure:

- 5000 psi max.

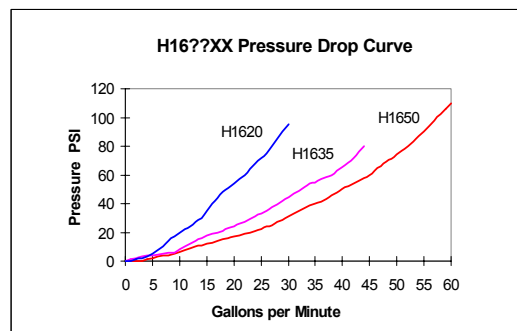
Cartridge Weight: 1.1 lbs.

Flow Range:(100 PSI fully open pressure drop)

- 0-20 GPM.
- 0-35 GPM.
- 0-50 GPM.

(Maximum flow ratings reflect flow at 100psi drop when valve is fully open. Valve will handle significantly higher flows at higher pressure drop.)

Cavity: 16-2, Industry common cavity, SAE #16 1 5/16 -12 UNC thread x 1.13 nose diameter.



Seal Kit = SFP25429

H16 * * * * *

How to Order

Select Flow Range
20 for 0-20 GPM
35 for 0-35 GPM
50 for 0-50 GPM

Manifold
No Manifold, Leave Blank.
10183 Standard Line Body, SAE #12
10183 LS Body with Load Sense Port, SAE #16
** Consult Factory for other options

HPC16 PRESSURE COMPENSATED (BYPASS) FLOW CONTROL to 45 GPM



Function: HPC16 is a three-port manual flow control cartridge providing pressure compensated flow to a priority port with excess flow bypassed to tank or other work functions. When the bypass port is plugged, the valve functions as a two-port pressure compensated flow control.

Applications: Any circuit requiring pressure compensated flow control to one function, with excess flow diverted to tank or other work functions (Valve will function with bypass pressure higher than priority pressure).

Flow Ranges:

- Priority flow range: 1 to 45 GPM
- Max input flow: 45 GPM

Operating Pressure:

- 3000 psi maximum (consult factory for higher pressures)

Cavity: 16-3 Industry Common Cavity (SAE #16, 1 5/16-12)

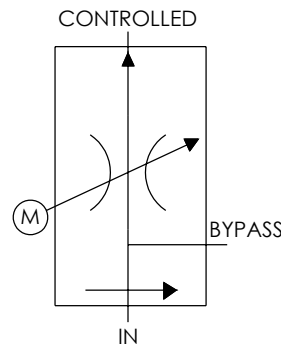
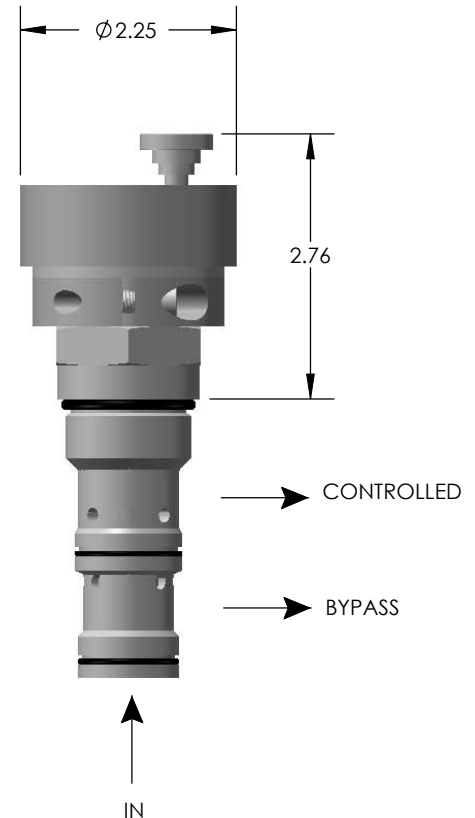
Temperature: -40 to 100° C

Internal Leakage: Less than .2 GPM at 3000 PSI

Installation: Torque at 45-50 ft-lbs (ON 1.50 HEX ONLY)

Costruction:

- Cartridge body and spool: steel
- Exposed Parts Plated



SEAL KIT = SFP25662
HOW TO ORDER

HPC16 ** *****

Select Flow Range:
15 for 1 to 15 GPM
25 for 1 to 25 GPM
45 for 1 to 45 GPM

Manifold:
10174 No Manifold, leave blank
Standard body line, SAE #12
Consult Factory for Other
Options